

LAKE CO

C H A R D O N

T O W N S H I P

T O W N S H I P

C H E S T E R

WEST DIVISION

2 3

10

4

8

9

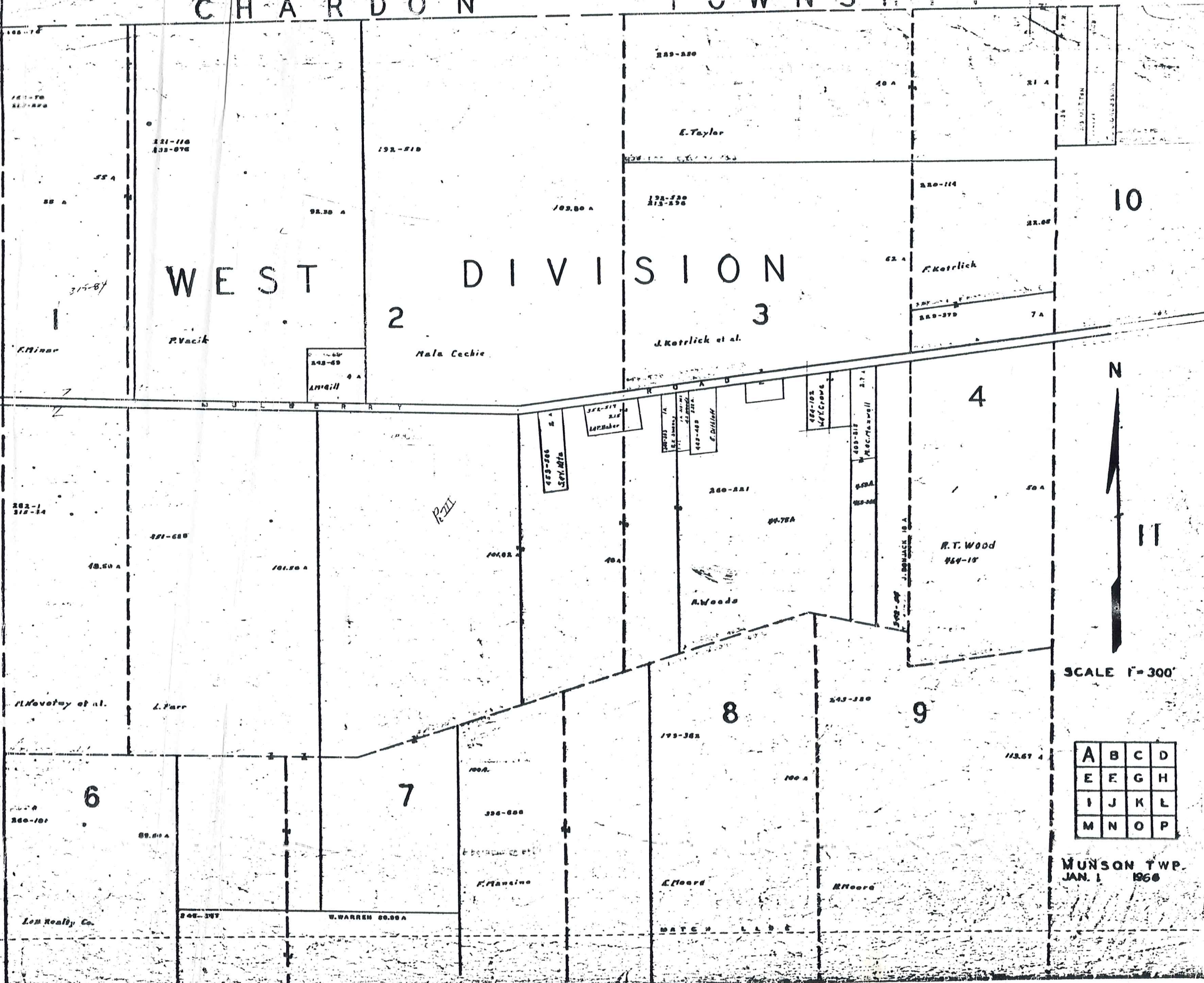
6

7

A	B	C	D
E	F	G	H
I	J	K	L
M	N	O	P

MUNSON TWP.
JAN. 1 1968

SCALE 1" = 300'



221-116
232-076

192-218

223-220

40 A

21 A

E. Taylor

192-220
213-226

220-114

22.00

62 A

J. Korrlick

220-114
220-114

7 A

J. Korrlick et al.

242-69
Amill

Mrs. Cecie

243-205
S. J. Miller

243-214
L. Baker

243-214
E. Miller

243-214
McGroove

243-214
MacFarwell

260-221

20.75 A

20 A

R. T. Wood
260-18

262-1
272-14

261-610

48.50 A

701.20 A

704.02

40 A

A. Woods

243-214
J. Demack 10 A

M. Kovach et al.

L. Parr

295-325

100 A

243-220

113.67 A

260-101

89.81 A

700 A

326-600

E. P. ...

F. Mancino

E. Hoard

R. Hoore

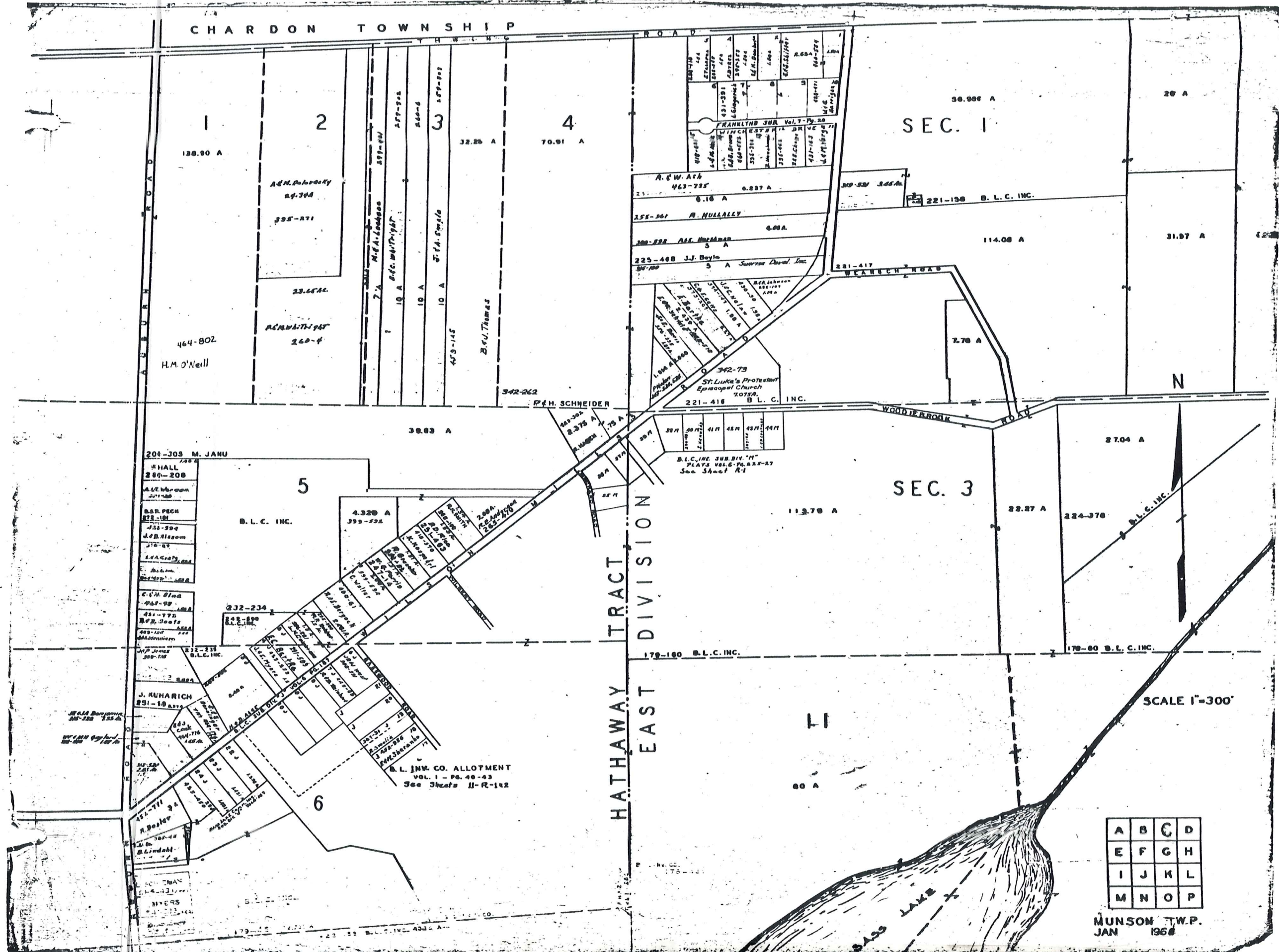
Low Realty Co.

246-207

W. WARREN 20.00 A

WATER LANE

CHARDON TOWNSHIP



SEC. 1

SEC. 3

HATHAWAY EAST DIVISION

SCALE 1"=300'

A	B	C	D
E	F	G	H
I	J	K	L
M	N	O	P

MUNSON TWP.
JAN 1968

T O W N S H I P

C H E S T E R

WEST DIVISION

12

TRACT TWO

CHAMPION TRACT

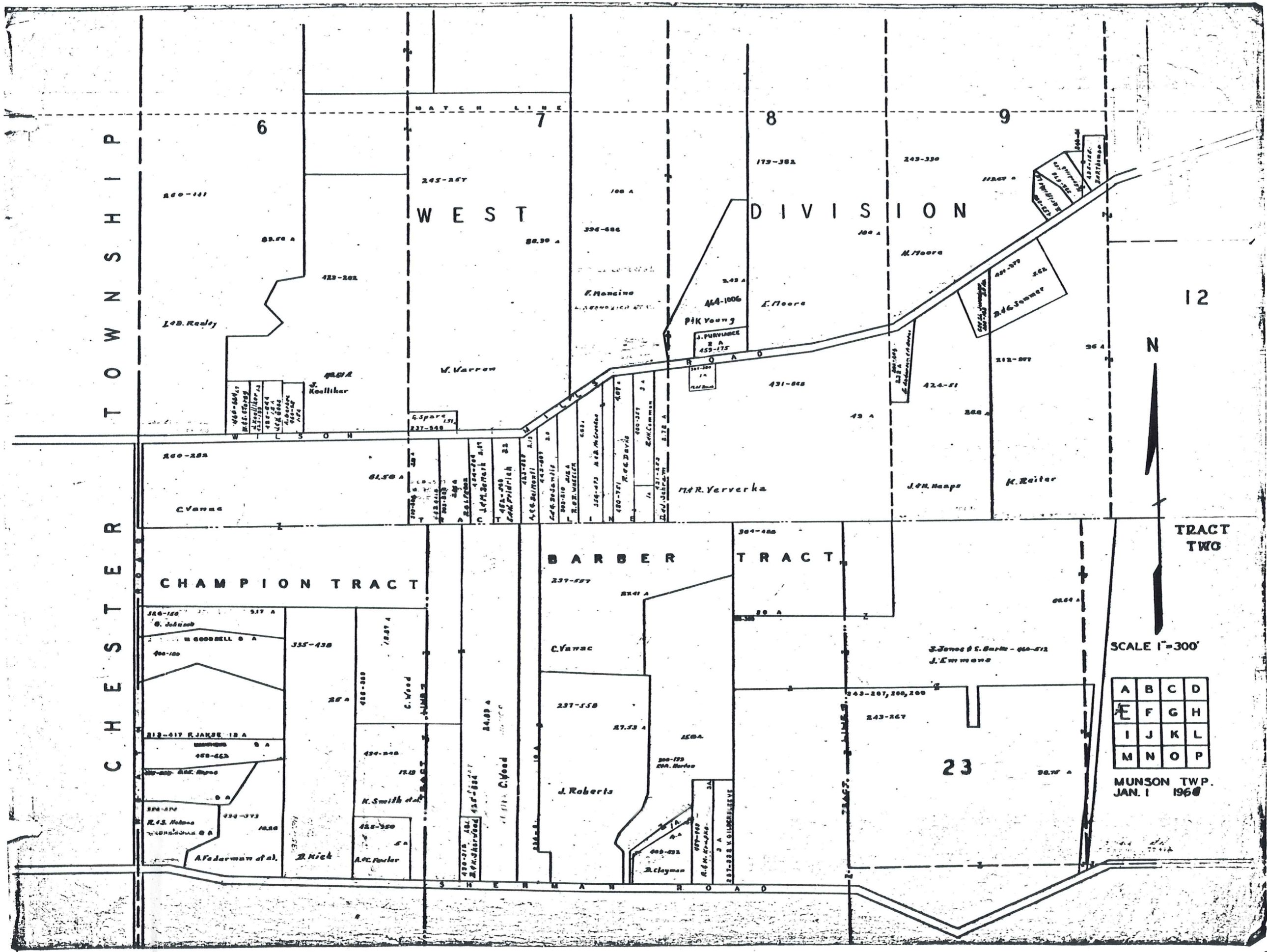
BARBER TRACT

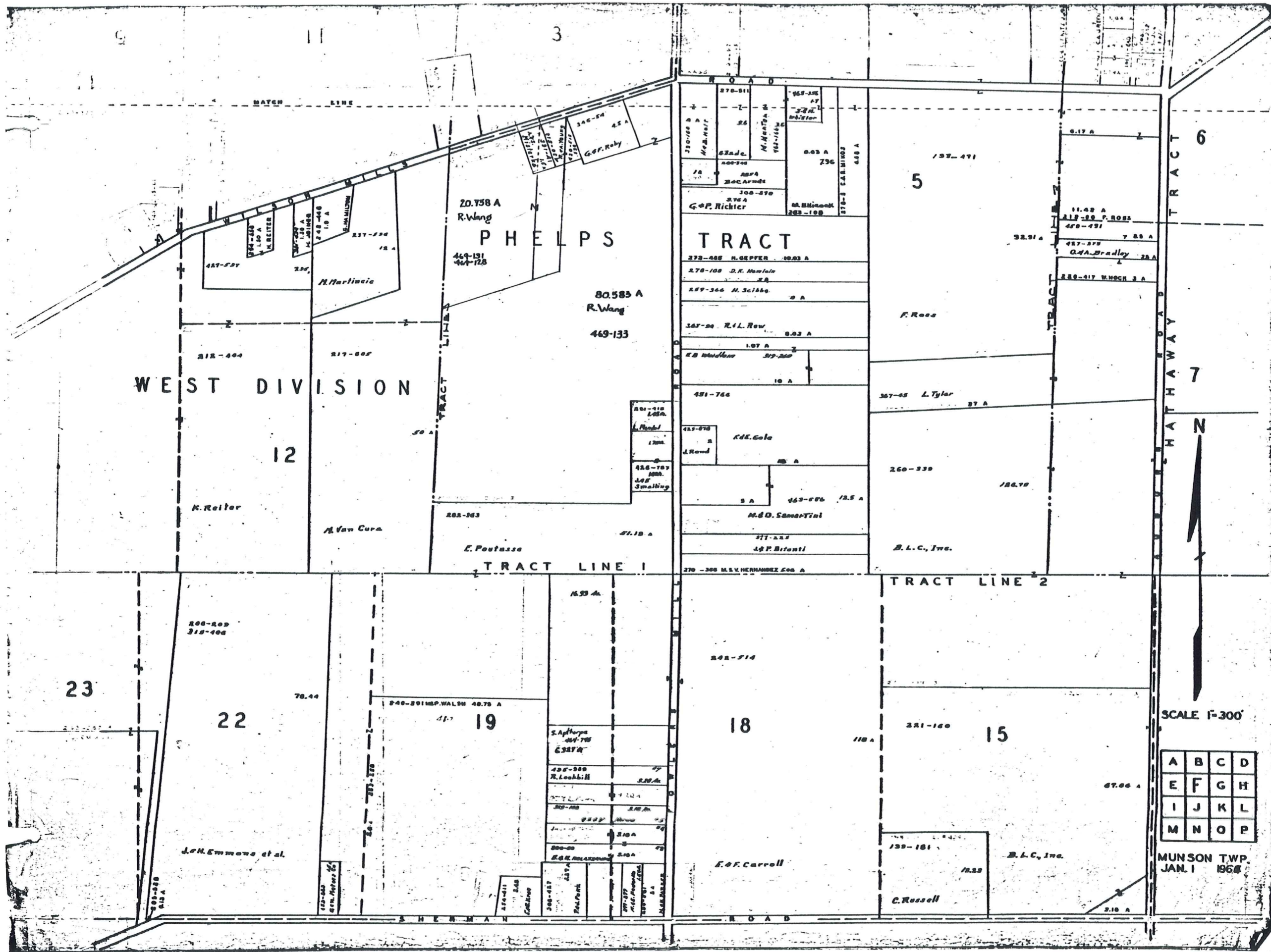
23

SCALE 1"=300'

A	B	C	D
E	F	G	H
I	J	K	L
M	N	O	P

MUNSON TWP. JAN. 1 1968





WEST DIVISION

PHELPS TRACT

TRACT LINE 1

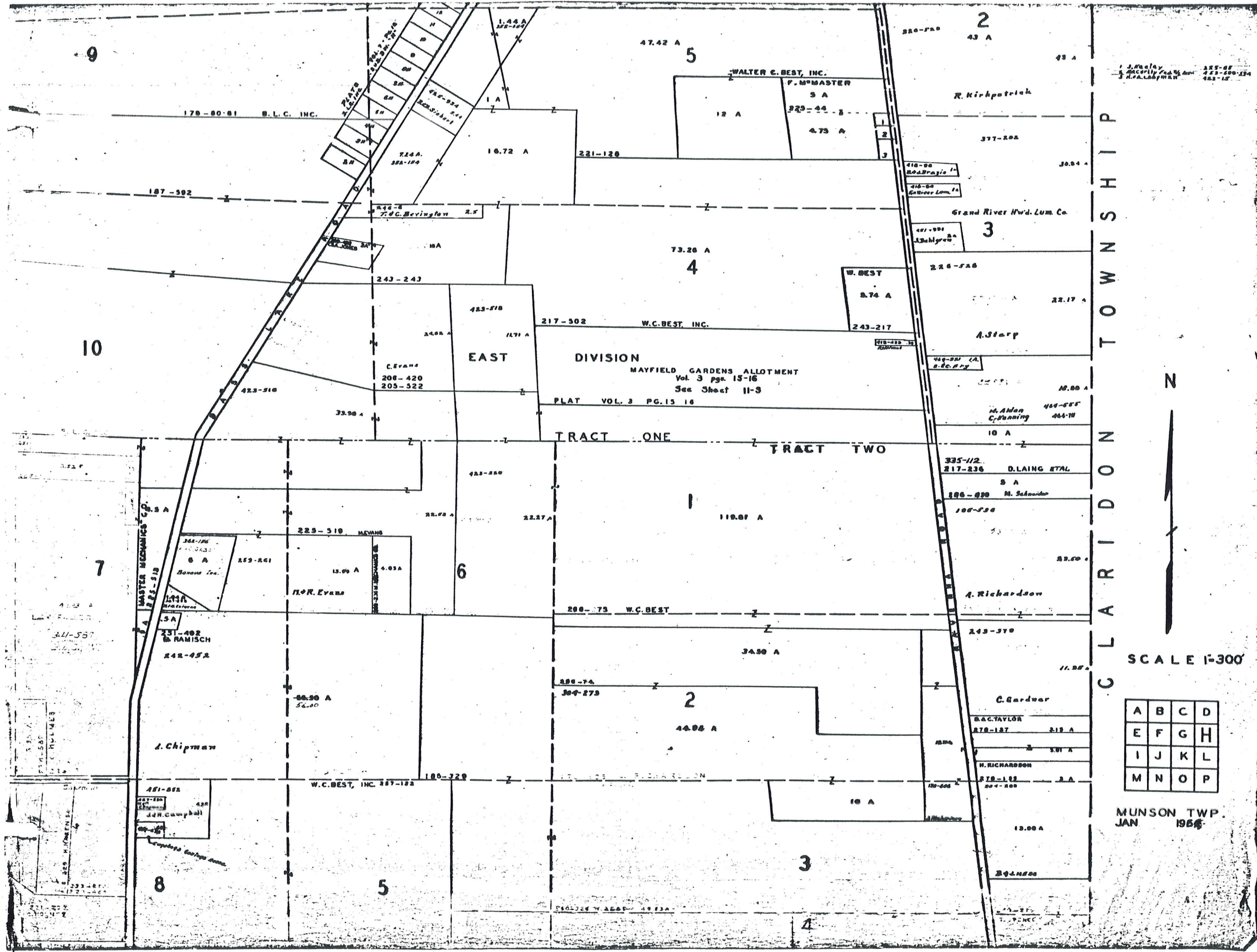
TRACT LINE 2

A	B	C	D
E	F	G	H
I	J	K	L
M	N	O	P

MUNSON TWP.
JAN. 1 1966

SCALE 1"=300'





J. Neely
 J. Neely
 J. Neely

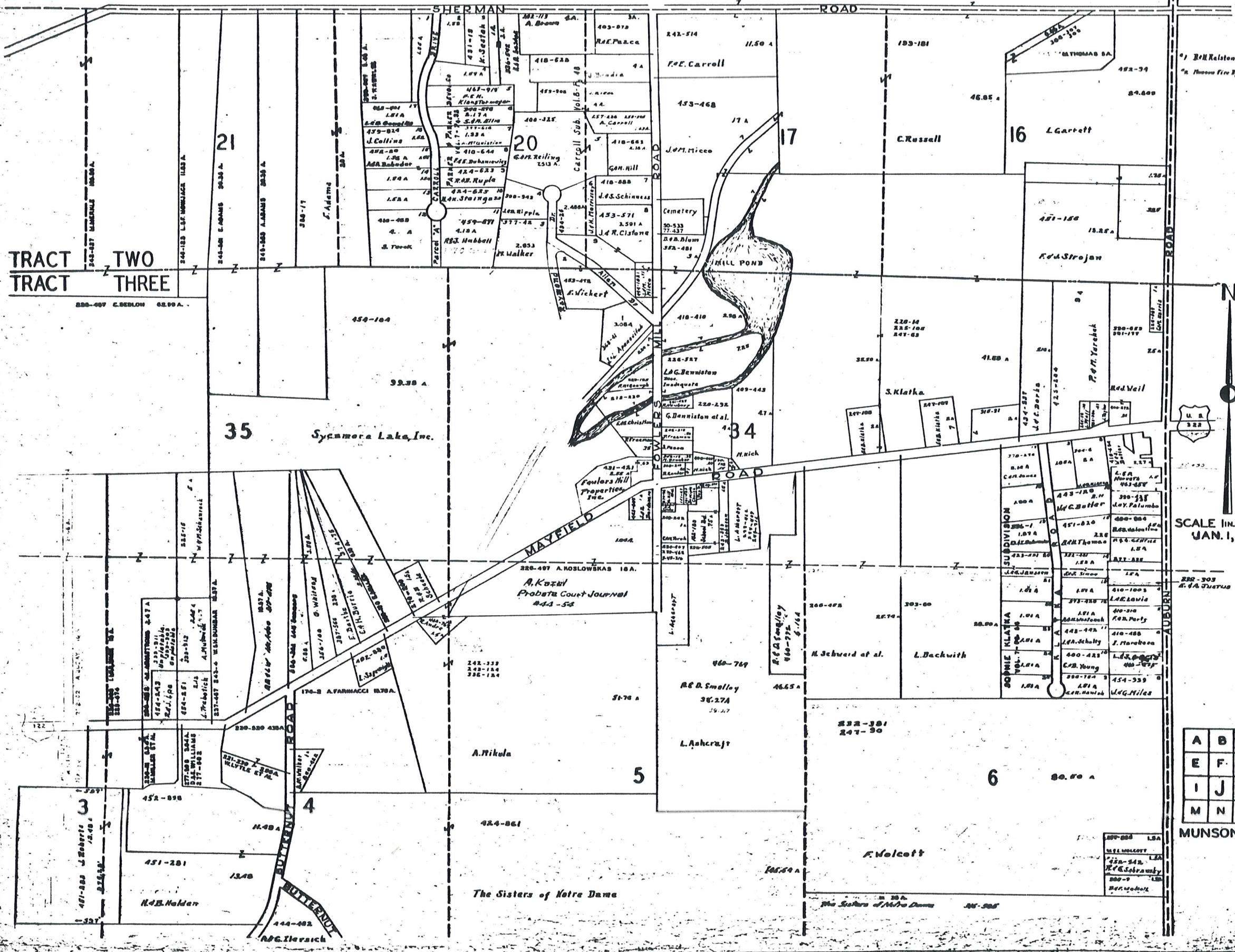
CLARION TOWNSHIP

N

SCALE 1"=300'

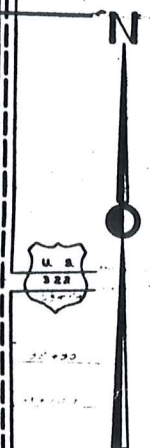
A	B	C	D
E	F	G	H
I	J	K	L
M	N	O	P

MUNSON TWP.
 JAN 1964



TRACT TWO
TRACT THREE

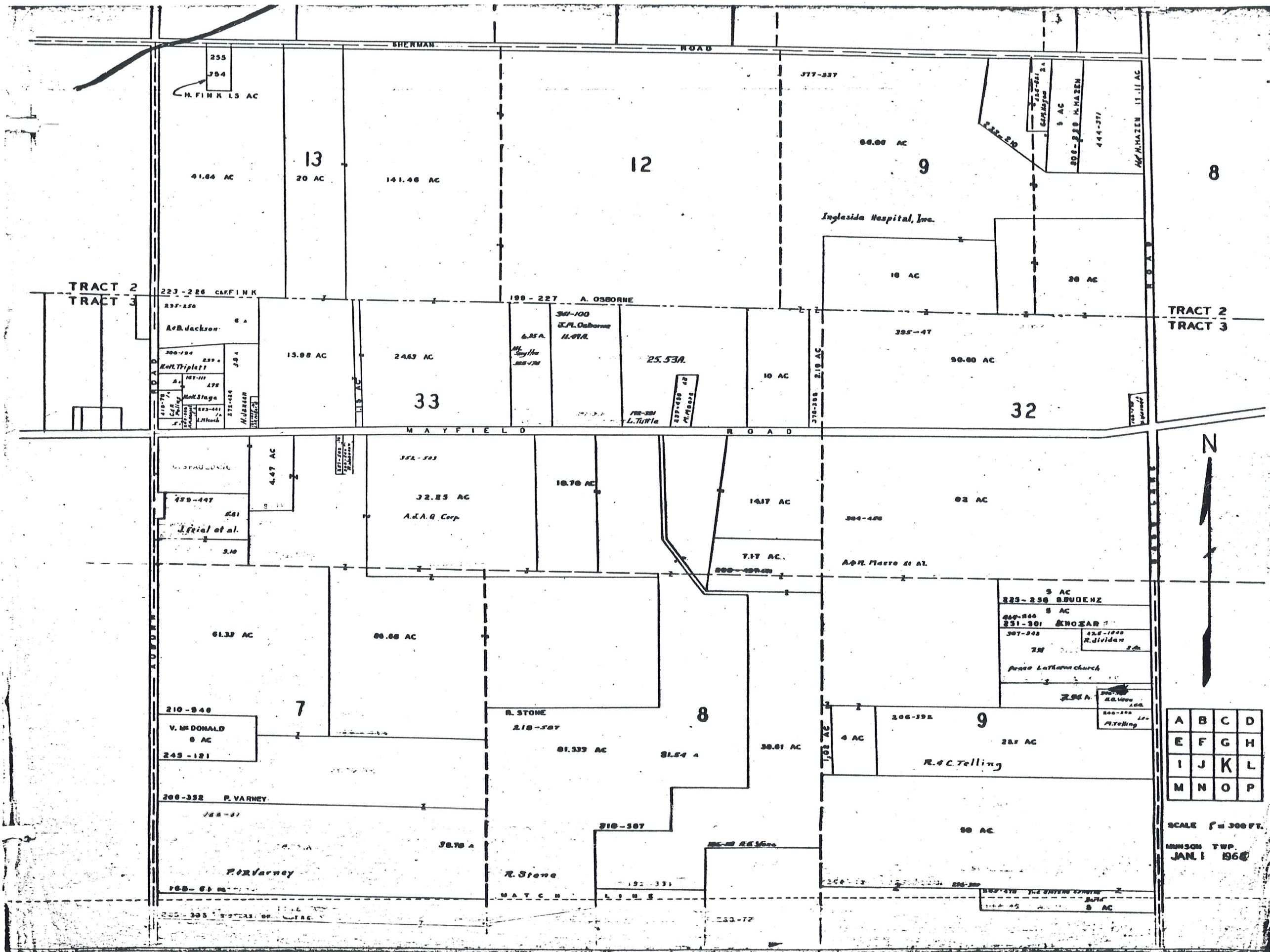
1) Bell Ralston 250-251 lot 24
2) Thomas Fire 150-250 lot 24



SCALE 1 IN. = 300 FT.
JAN. 1, 1968

A	B	C	D
E	F	G	H
I	J	K	L
M	N	O	P

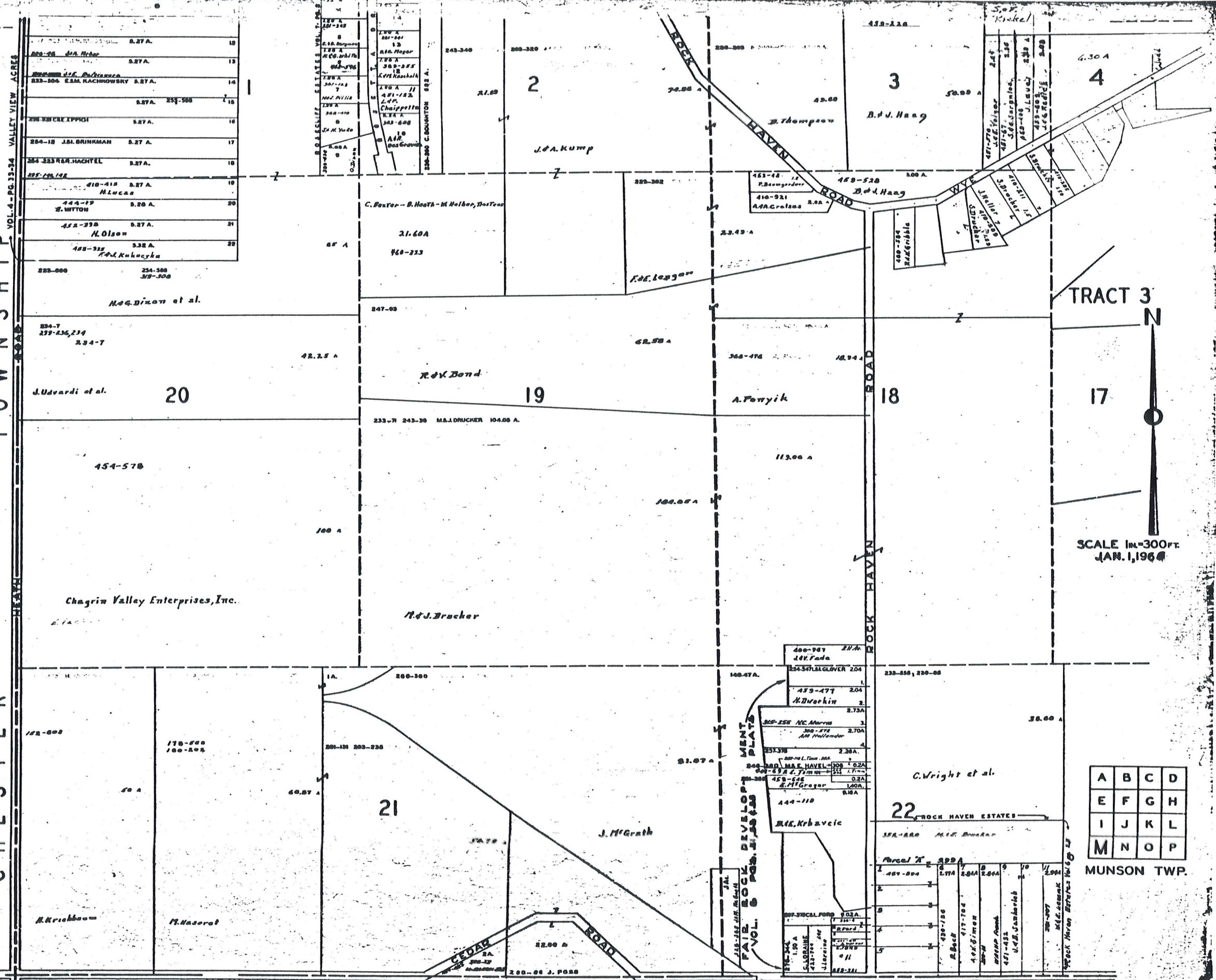
MUNSON TWP.



A	B	C	D
E	F	G	H
I	J	K	L
M	N	O	P

SCALE 1" = 300 FT.
 MUNSON TWP.
 JAN 1 1966

CHESTER TOWNSHIP



VALLEY VIEW ACRES

200-28	J.A. Hager	5.27 A.	19
200-29	J.A. Hager	5.27 A.	13
200-30	E.S.M. RACHNOWSKI	5.27 A.	14
200-31		5.27 A.	15
200-32	J.S.L. BRINKMAN	5.27 A.	17
200-33	R.H. HACHTEL	5.27 A.	18
200-34		5.27 A.	16
200-35		5.27 A.	10
200-36		5.27 A.	20
200-37		5.27 A.	21
200-38		5.27 A.	22

TRACT 3

N

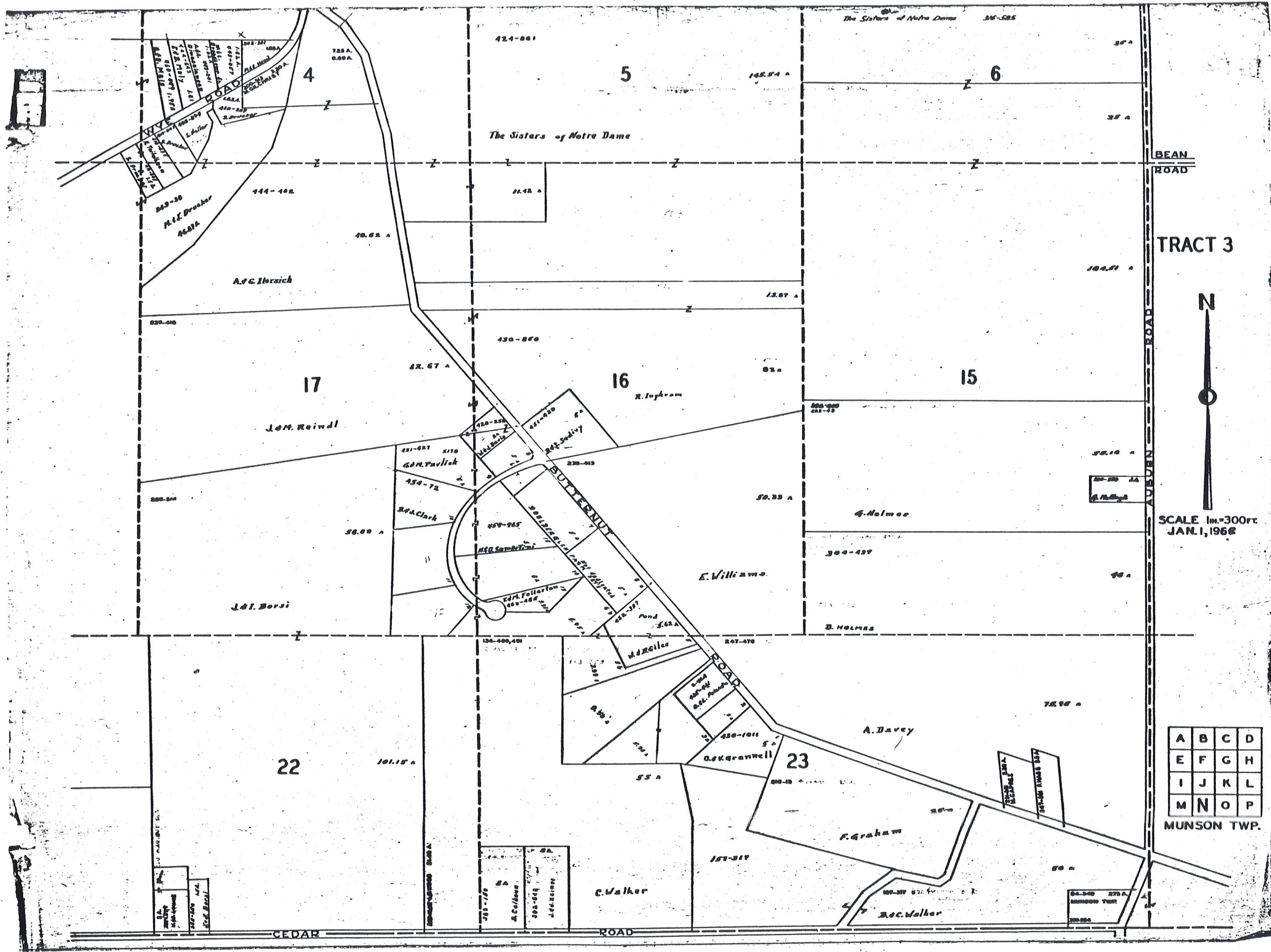
SCALE 1"=300 FT.
JAN. 1, 1964

A	B	C	D
E	F	G	H
I	J	K	L
M	N	O	P

MUNSON TWP.

MENT PLATS
FAIR, ROCK DEVELOP
VOL. 8 PGS. 21, 22, 23

400-987	2.17 A.	1
400-988	2.17 A.	2
400-989	2.17 A.	3
400-990	2.17 A.	4
400-991	2.17 A.	5
400-992	2.17 A.	6
400-993	2.17 A.	7
400-994	2.17 A.	8
400-995	2.17 A.	9
400-996	2.17 A.	10
400-997	2.17 A.	11
400-998	2.17 A.	12
400-999	2.17 A.	13
400-1000	2.17 A.	14
400-1001	2.17 A.	15
400-1002	2.17 A.	16
400-1003	2.17 A.	17
400-1004	2.17 A.	18
400-1005	2.17 A.	19
400-1006	2.17 A.	20
400-1007	2.17 A.	21
400-1008	2.17 A.	22
400-1009	2.17 A.	23
400-1010	2.17 A.	24
400-1011	2.17 A.	25
400-1012	2.17 A.	26
400-1013	2.17 A.	27
400-1014	2.17 A.	28
400-1015	2.17 A.	29
400-1016	2.17 A.	30
400-1017	2.17 A.	31
400-1018	2.17 A.	32
400-1019	2.17 A.	33
400-1020	2.17 A.	34
400-1021	2.17 A.	35
400-1022	2.17 A.	36
400-1023	2.17 A.	37
400-1024	2.17 A.	38
400-1025	2.17 A.	39
400-1026	2.17 A.	40
400-1027	2.17 A.	41
400-1028	2.17 A.	42
400-1029	2.17 A.	43
400-1030	2.17 A.	44
400-1031	2.17 A.	45
400-1032	2.17 A.	46
400-1033	2.17 A.	47
400-1034	2.17 A.	48
400-1035	2.17 A.	49
400-1036	2.17 A.	50
400-1037	2.17 A.	51
400-1038	2.17 A.	52
400-1039	2.17 A.	53
400-1040	2.17 A.	54
400-1041	2.17 A.	55
400-1042	2.17 A.	56
400-1043	2.17 A.	57
400-1044	2.17 A.	58
400-1045	2.17 A.	59
400-1046	2.17 A.	60
400-1047	2.17 A.	61
400-1048	2.17 A.	62
400-1049	2.17 A.	63
400-1050	2.17 A.	64
400-1051	2.17 A.	65
400-1052	2.17 A.	66
400-1053	2.17 A.	67
400-1054	2.17 A.	68
400-1055	2.17 A.	69
400-1056	2.17 A.	70
400-1057	2.17 A.	71
400-1058	2.17 A.	72
400-1059	2.17 A.	73
400-1060	2.17 A.	74
400-1061	2.17 A.	75
400-1062	2.17 A.	76
400-1063	2.17 A.	77
400-1064	2.17 A.	78
400-1065	2.17 A.	79
400-1066	2.17 A.	80
400-1067	2.17 A.	81
400-1068	2.17 A.	82
400-1069	2.17 A.	83
400-1070	2.17 A.	84
400-1071	2.17 A.	85
400-1072	2.17 A.	86
400-1073	2.17 A.	87
400-1074	2.17 A.	88
400-1075	2.17 A.	89
400-1076	2.17 A.	90
400-1077	2.17 A.	91
400-1078	2.17 A.	92
400-1079	2.17 A.	93
400-1080	2.17 A.	94
400-1081	2.17 A.	95
400-1082	2.17 A.	96
400-1083	2.17 A.	97
400-1084	2.17 A.	98
400-1085	2.17 A.	99
400-1086	2.17 A.	100



BEAN ROAD

TRACT 3



SCALE 1 in. = 300 ft.
JAN. 1, 1968

A	B	C	D
E	F	G	H
I	J	K	L
M	N	O	P

MUNSON TWP.

22

23

5

6

17

16

15

J.M. Reindl

R. Ingham

G. Holmes

E. Williams

J.M. Borsi

A. Davy

F. Graham

C. Walker

B.C. Walker

424-861

148.54 A

38 A

38 A

144-102

21.42 A

48.62 A

A.C. Ibraich

13.67 A

104.51 A

430-860

62.67 A

83 A

83 A

32.18 A

56.00 A

50.33 A

304-437

D. HOLMES

98 A

M. Gillis

207-470

75.98 A

55 A

157-317

60 A

327-100
327-100
327-100
327-100

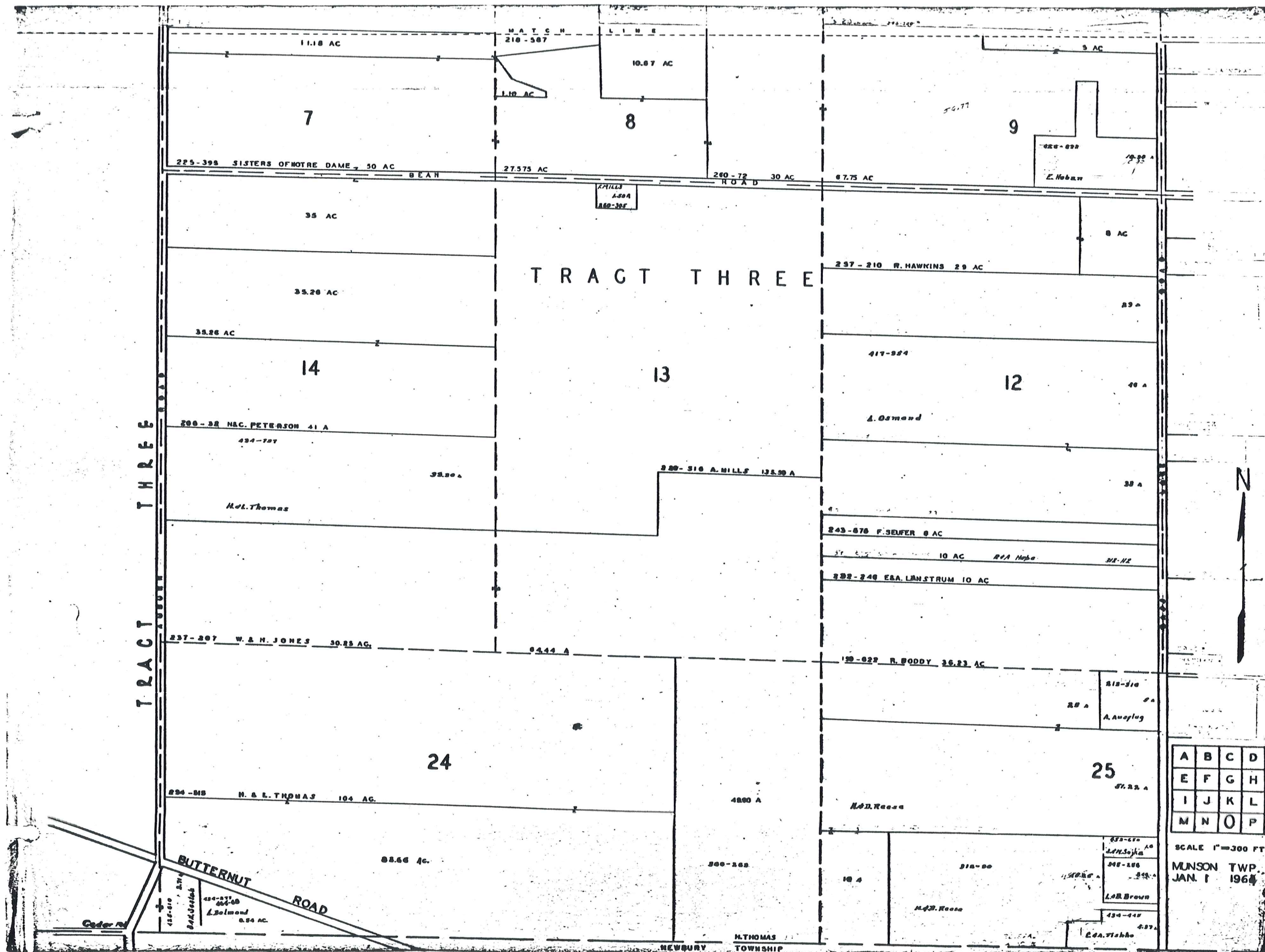
325-126
M. Collins
325-126
325-126

325-126
325-126
325-126
325-126

CEDAR ROAD

ROAD

AUBURN ROAD



TRACT THREE

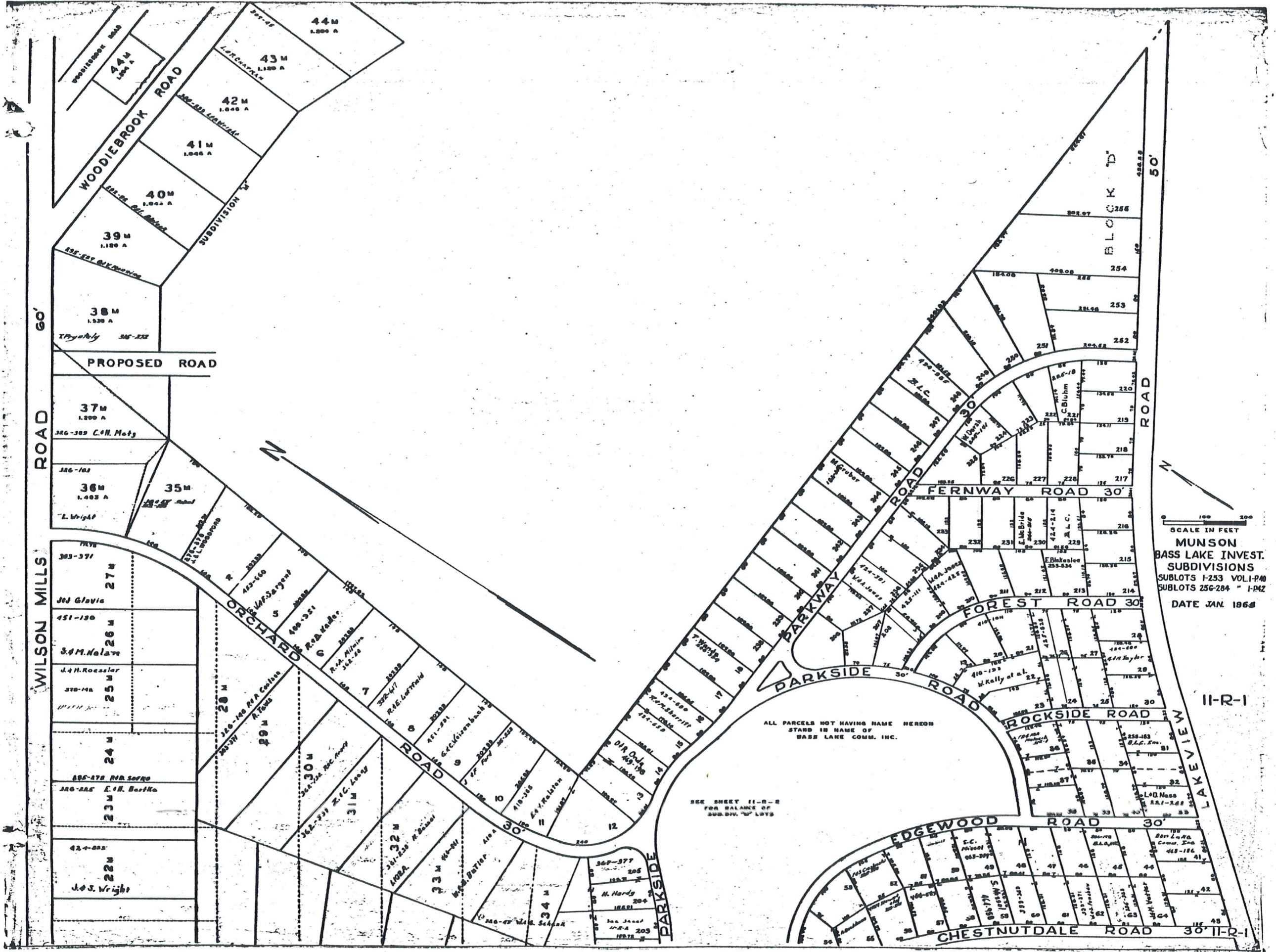
TRACT THREE

A	B	C	D
E	F	G	H
I	J	K	L
M	N	O	P

SCALE 1"=300 FT
MUNSON TWP.
JAN. 1 1964

BUTTERNUT ROAD

NEWBURY TOWNSHIP



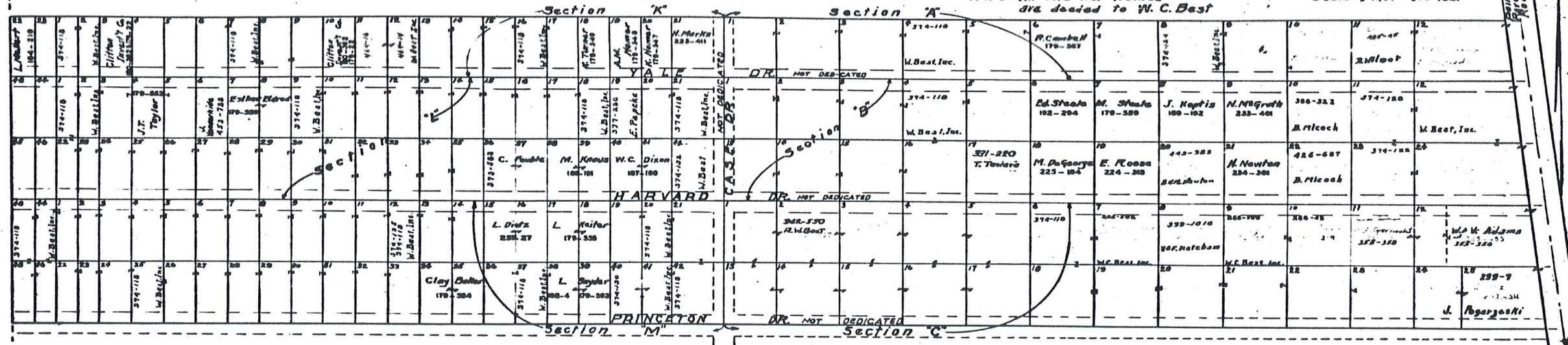
SCALE IN FEET
 0 100 200
MUNSON
 BASS LAKE INVEST.
 SUBDIVISIONS
 SUBLOTS 1-253 VOL. I-P-40
 SUBLOTS 256-284 " I-P-42
 DATE JAN. 1964

II-R-1

II-R-1

MAYFIELD GARDENS — Subdivision No 1 Vol. 3 pgs. 15 & 16 (Plats)

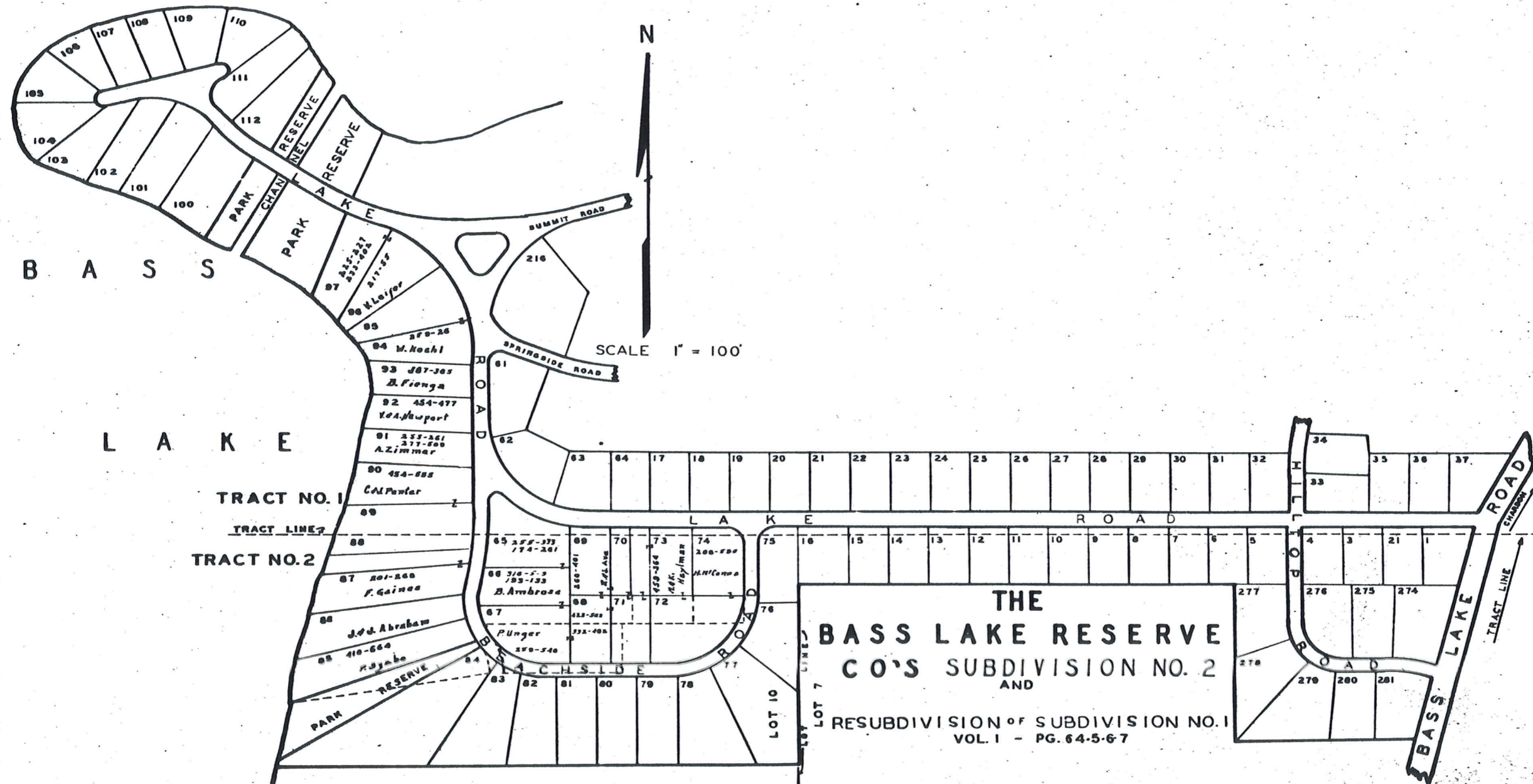
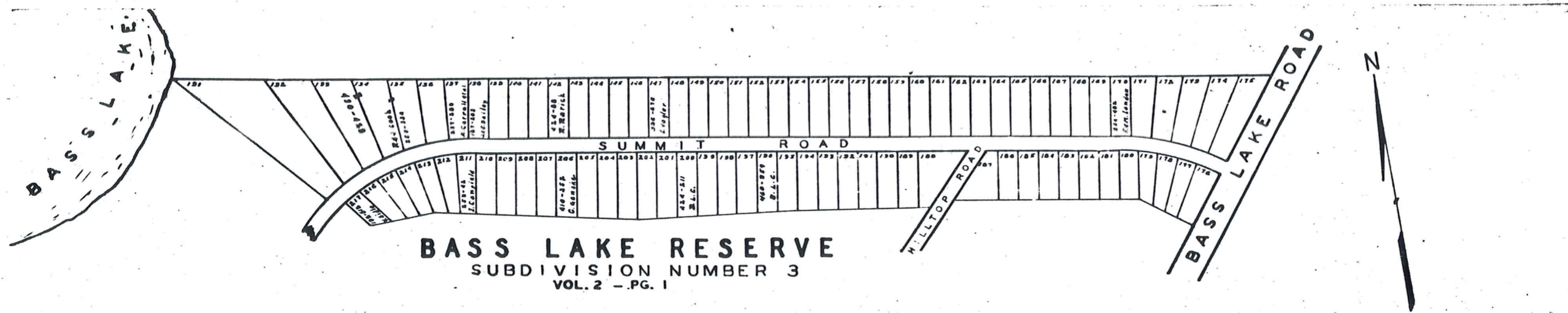
Notes: All lots not named are dedicated to W.C. Best Scale 1 inch = 100 feet



WALTER C. BEST INC.						WALTER C. BEST						WALTER C. BEST INC.						WALTER C. BEST					
SEC. H		SEC. L		SEC. M		SEC. K		SEC. L		SEC. M		SEC. A		SEC. B		SEC. C		SEC. A		SEC. B		SEC. C	
LOT	VOL. & PAGE	LOT	VOL. & PAGE	LOT	VOL. & PAGE	LOT	VOL. & PAGE	LOT	VOL. & PAGE	LOT	VOL. & PAGE	LOT	VOL. & PAGE	LOT	VOL. & PAGE	LOT	VOL. & PAGE	LOT	VOL. & PAGE	LOT	VOL. & PAGE	LOT	VOL. & PAGE
232	434	232	434	232	434							232	434	232	434	232	434						
233	435	233	435	233	435							233	435	233	435	233	435						
234	436	234	436	234	436							234	436	234	436	234	436						
235	437	235	437	235	437							235	437	235	437	235	437						
236	438	236	438	236	438							236	438	236	438	236	438						
237	439	237	439	237	439							237	439	237	439	237	439						
238	440	238	440	238	440							238	440	238	440	238	440						
239	441	239	441	239	441							239	441	239	441	239	441						
240	442	240	442	240	442							240	442	240	442	240	442						
241	443	241	443	241	443							241	443	241	443	241	443						
242	444	242	444	242	444							242	444	242	444	242	444						
243	445	243	445	243	445							243	445	243	445	243	445						
244	446	244	446	244	446							244	446	244	446	244	446						
245	447	245	447	245	447							245	447	245	447	245	447						
246	448	246	448	246	448							246	448	246	448	246	448						
247	449	247	449	247	449							247	449	247	449	247	449						
248	450	248	450	248	450							248	450	248	450	248	450						
249	451	249	451	249	451							249	451	249	451	249	451						
250	452	250	452	250	452							250	452	250	452	250	452						

JAN. 1968

11-S



JAN. 1966
11-T